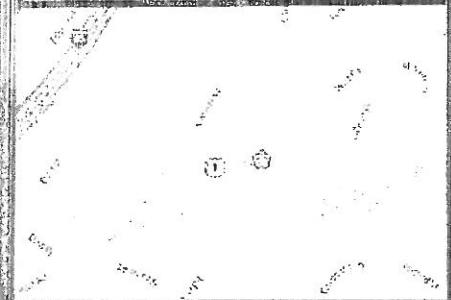


FOR LEASE

LOCATION :

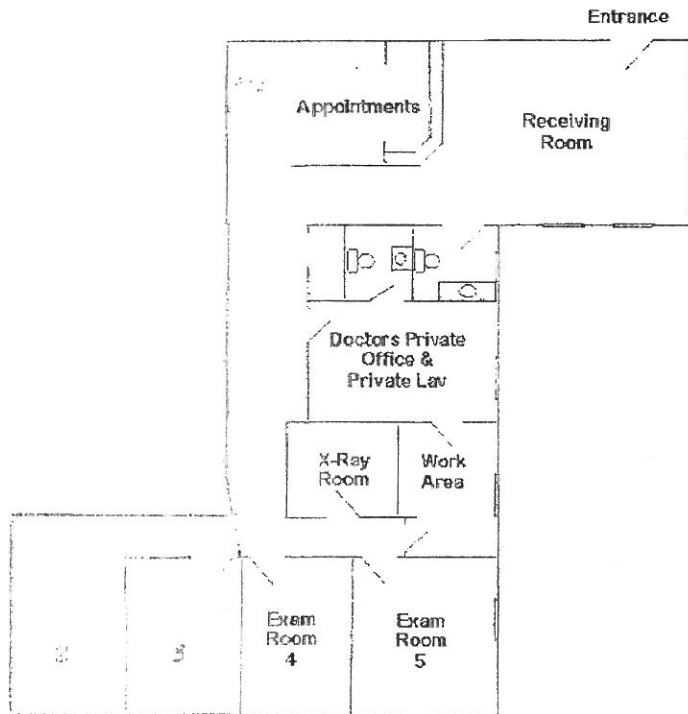


FEATURES & AMENITIES :

Available Square Feet: 1,000
Price Per SF: \$/ NNN
Current Use: Dental Office
Total Exam Rooms: 2 OR 3
Restrooms: 2
Heating: Gas/Forced Hot Air
A/C: Central Air
Style: Professional Building
Year Built: 1962
Land: .34
Stories: 2
Current Use: Dental Office
Parking: Ample
Handicap Accessible
Next to future site of *Bed Bath & Beyond*

SUMMARY

For eleven years this office has been home to a state of the art dental practice, offering five dental chairs and built in office equipment. Located at the "Gateway to Historic Grasmere" on the Post Road this building has optimum visibility. This space would also be well suited for; Optometry, Podiatry, Attorney, Accountant, Insurance, Broker, etc....



Munson Real Estate

48 Reef Road  Fairfield, CT.

Office (203) 255-0700 Fax (203) 259-8181
www.munsonrealestate.com

CONTACT :

Doug Munson
255-0700

John Silos
331-2333